

dedication
may 1971

**LYCOMING
COUNTY
COURTHOUSE**



foreword

While a Foreword is usually associated only with literary endeavors, it does seem a quite appropriate addition to this dedication remembrance. In this instance Foreword is not only a manner of introducing this booklet, but its homophonous counterpart, Forward, has become the unofficial theme of Lycoming County.

The new \$3,500,000 courthouse being dedicated today is only one example of how Lycoming County has moved Forward. Not only is efficiency evident in the physical structure, but also in the modern conveniences provided for county taxpayers.

This booklet provides but a brief pictorial tour of the new county facility. However, the ultimate efficiency embodied in the structure and the services offered are evident to all who view the new courthouse with an objective eye.

program

	Music by the Lycoming County Band (Students from county high schools)
	Flag raising and Pledge of Allegiance
INVOCATION	Rev. Doyle L. Luckenbaugh St. John's United Church of Christ
WELCOME	John C. Gault President, Lycoming County Bar Assn.
HISTORICAL REVIEW	Pres. Judge Charles F. Greevy
TIME CAPSULE	Dr. Loring Priest
PRESENTATION OF KEYS	Lundy Construction Co. to Wagner and Hartman Assoc.
ACCEPTANCE OF KEYS	Paul K. Bloom Chairman, Lycoming Co. Commissioners
DEDICATION PRAYER	Monsignor Eugene J. Clark St. Boniface Church
INTRODUCTION OF SPEAKER	Judge Thomas Wood
SPEAKER	Assoc. Justice Ben R. Jones Pa. State Supreme Court
BENEDICTION	Rabbi David L. Schwartz Temple Beth Ha Sholom
OPEN HOUSE	Courthouse Tours

history

This is not the first structure to stand on this plot of ground. It is the third courthouse erected on this site. The first was built in 1804.

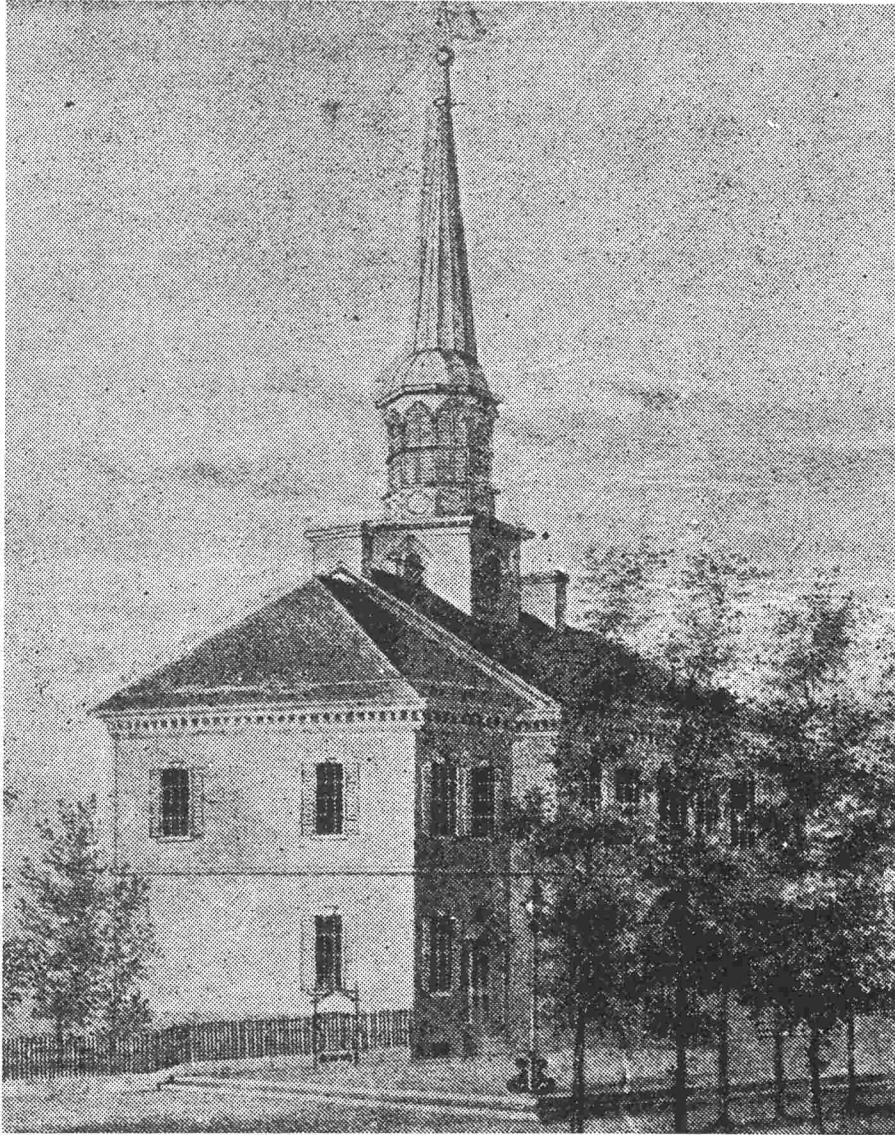
The first courthouse was a brick structure which was built according to tradition of that time. Many county residents participated in the raising of the roof and a holiday mood was upon the community as the building neared completion.

This mood is apparent with a check of old county minute books. Among the courthouse costs is noted one item for 9 gallons of whiskey. An item of that nature would seem scandalous if it appeared on today's minutes. At that time however, such a purchase was deemed as important as a keg of nails for the construction of the building.

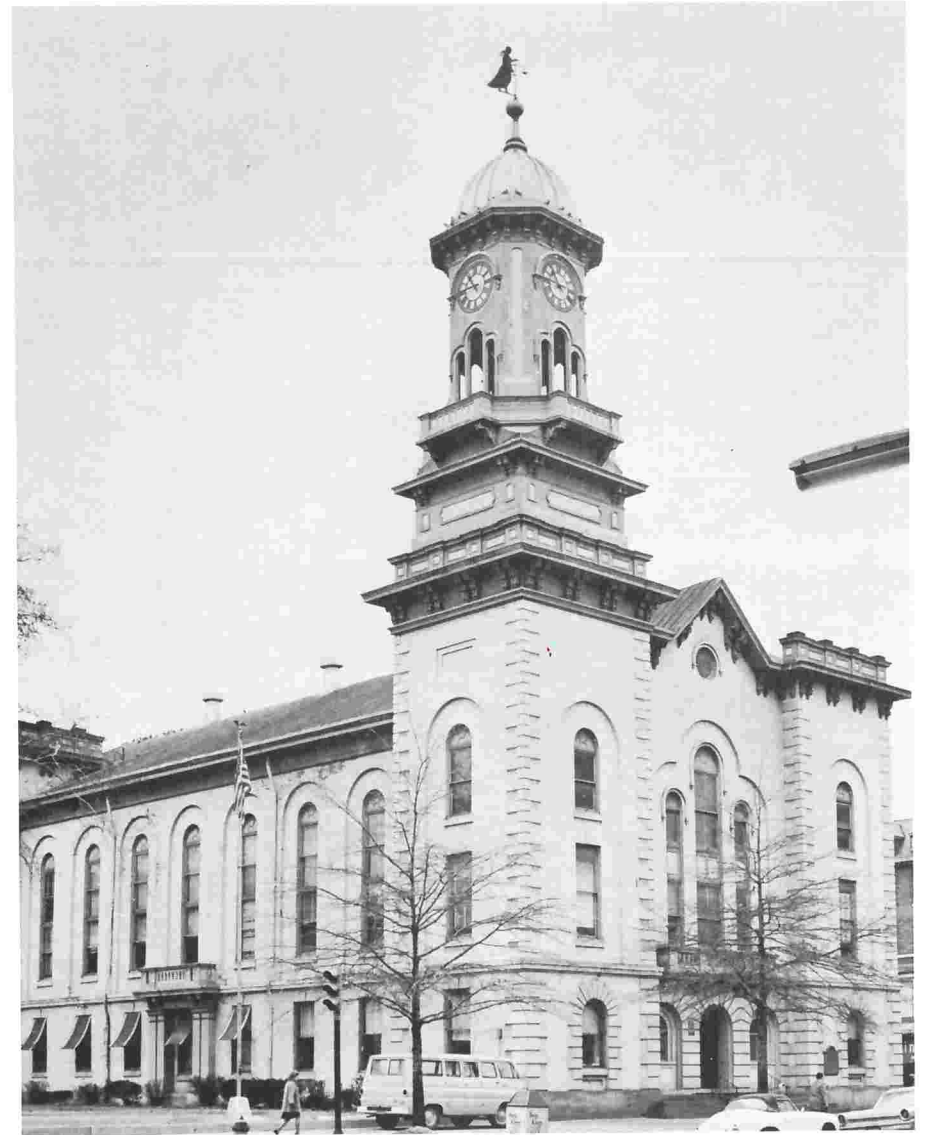
Lycoming County continued to grow and by 1860 the original courthouse was no longer adequate to serve the needs of the people. The county commissioners of that time decided to raze the old structure and build a new building. Historically-minded residents of that era protested. After much discussion and study it was decided to construct an addition to the original building and preserve its historical significance.

In order to accommodate an addition it was necessary to remove the roof of the courthouse. Once this was done it was found the original construction was not sound enough to permit an addition. One can not help but wonder that the 9 gallons of whiskey were a factor in the poor quality of the original structure.

In any event, it was decided to build a new structure. The original courthouse was razed and construction of a new building began in 1860. In 1900, that structure proved to be too small and an addition was constructed. That building and addition stood on this site until the spring of 1969 when it was razed to make way for a new and modern facility.



*First Courthouse
1801-1860*



*Courthouse constructed in 1860
—Razed in 1969.*



The steel skeleton for the new building took shape in October 1969. In winter it was shrouded with heavy plastic and . . .





*By mid-February
of 1971
the offices were occupied.*

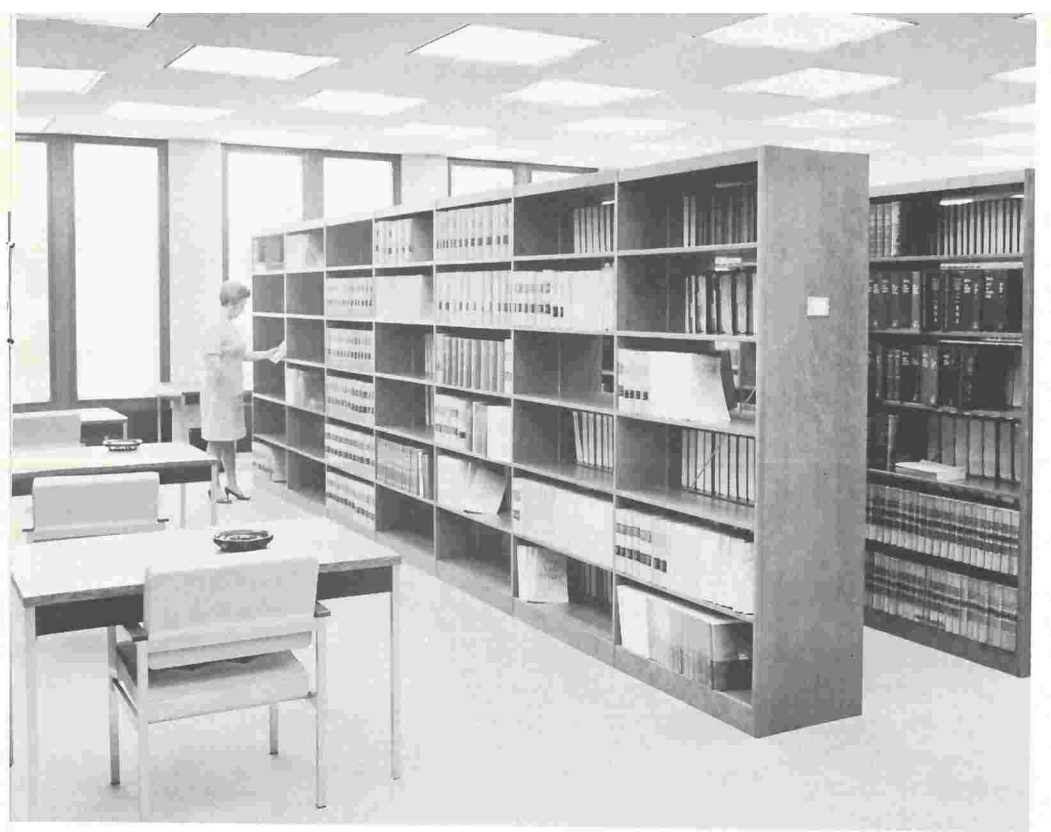
*only the
finishing touches
remained ...
by the Fall
of 1970.*



*New, modern facilities
increase the efficiency
of county government.*



*Commissioner's
Conference Room.*



Law Library.



*Commissioner's
Waiting Room.*



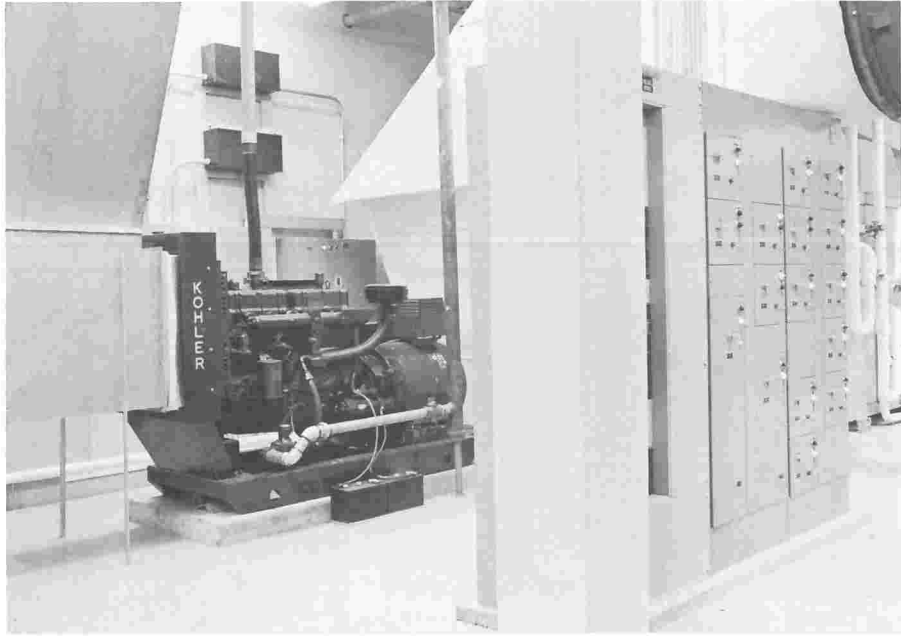
*Civil Defense
Radio Room.*

Some history however, has been preserved. Symbolic court statues, placed high in the design of the former main court room have been made a center of attraction on the court floor of the new building. While being moved from the old courthouse, the statues were accidentally dropped and almost destroyed. Robert H. Schuler, a Williamsport High School art instructor, reconstructed and restored them.



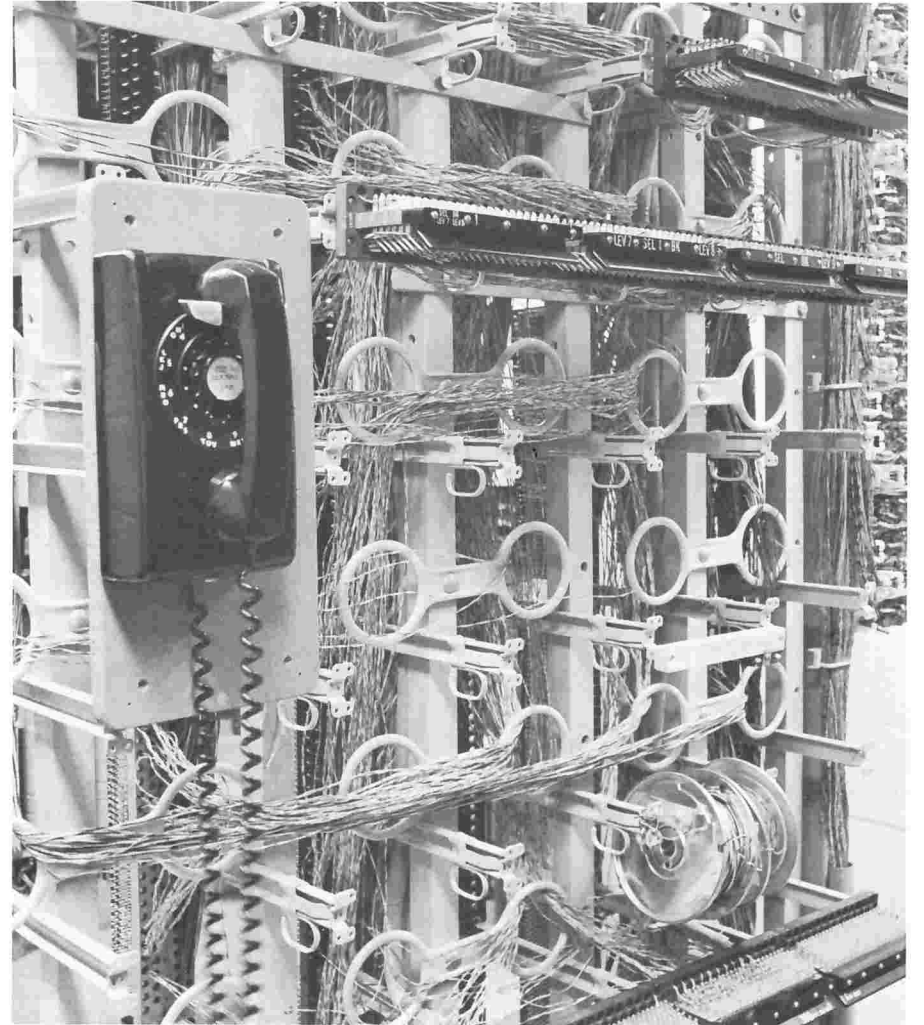
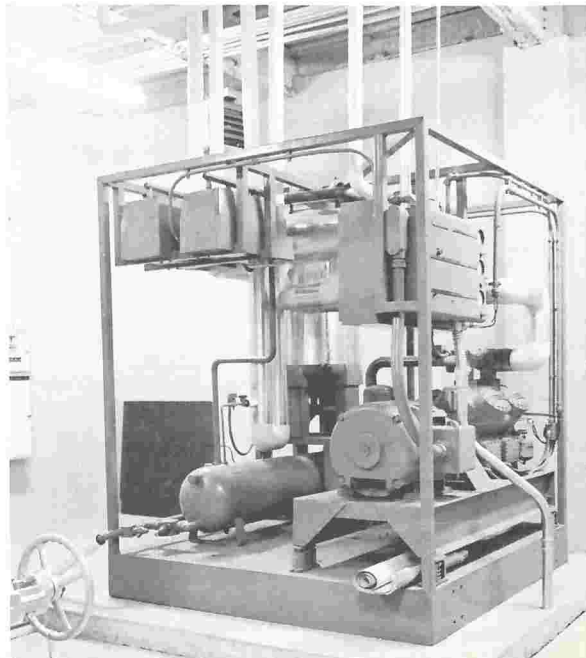
While the court's function has not changed, the setting has . . . Modern design ranges from dark paneled walls to a windowed courtroom in the round.





*Although government is sometimes complicated,
it must relate to the people.
It is our hope that all of this, the new construction,
the new ideas, the increased efficiency,
will serve to keep Lycoming County on a Forward path.*

*And finally
out of view of most . . .
the mechanics of efficiency.*



<i>Commissioners:</i>	Paul K. Bloom John W. Durrwachter Henry F. Frey
<i>Judges:</i>	Charles F. Greevy, Pres. Thomas Wood
<i>District Attorney:</i>	Allen E. Ertel
<i>Sheriff:</i>	L. Eugene Pauling
<i>Treasurer:</i>	Irene S. Migrath
<i>Controller:</i>	Jerome R. Patterson
<i>Prothonotary:</i>	Carolyn M. Wither
<i>Register & Recorder:</i>	Mary G. Mosser
<i>Jury Commissioners:</i>	Miles H. Lundy J. Donald Egly
<i>Coroner:</i>	Earl R. Miller, M.D.
<i>County Surveyor:</i>	John A. Bubb
<i>Commissioners Living (3):</i>	W. Clyde Harer Paul D. Bailey Robert G. Little
<i>Wagner & Hartman Associates</i>	Architects
<i>Lundy Construction Company</i>	General Contractor
<i>McDermott Brothers</i>	Electrical Contractors
<i>Homer L. Barton</i>	Plumbing
<i>Clayton C. Smith</i>	Heating & Air-Conditioning
<i>Filson-Gingrich & Minnich</i>	Engineers
<i>Lycoming County Authority:</i>	George L. Stearns II Samuel H. Hoff, Sr. Quinton J. Beauge John G. Detwiler Thomas J. Rider