

MEMORANDUM

To: LLA Membership
From: Gary Weber
Date: January 6, 2008
Subject: Annual Report of Lycolaw Website

The Lycolaw Website continues to grow, to add additional features and to provide a source for LLA members to secure practice information, court information, CLE and event information and other useful material. The site continues to offer up-to-date announcements, local rule information, attorney directory and event scheduling notification. Announcements and orders from the Court, including the court calendar, are posted immediately.

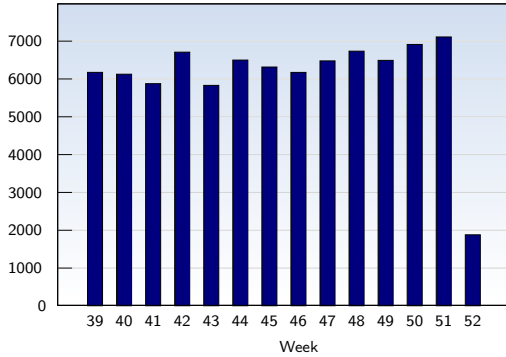
In 2007, we started to post summaries of recently issued court opinions on the front page. The opinion text is often posted within a day or two, but in no event, more than 30 days after issuance.

Statistics for 2007:

- In 2007, there were 691,267 “hits” on the site, with the highest number occurring in July - over 80,000. Of these visits, 367,825 were classified as “unique.”
- By far the most popular pages are the attorney directory pages. LLA member directory and member profile pages were accessed over 90,000 times in 2008. This statistic demonstrates the importance of members displaying accurate and useful information in their directory listing.
- The main page continues to include summaries of news and articles about our members and their involvement in the community. In 2008, that page was accessed 58,000 times, and readers clicked on article summaries to read full articles over 12,000 times. This reinforces the importance of submitting information about your involvement in the community to me for inclusion.
- 212 new court opinions were posted last year. This brings the total number of opinions available on the site to 2147.



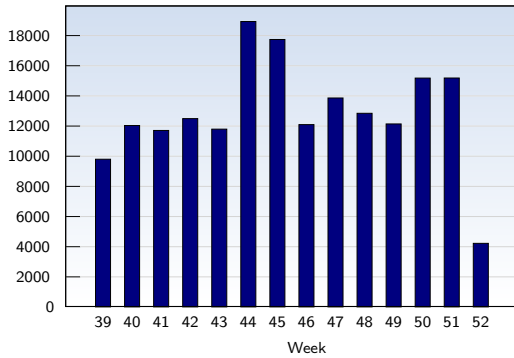
Unique Visits



This analysis summarizes multiple page impressions of an individual visitor into unique visits. A visitor is counted as an unique visit when requesting at least one page. If more than 30 minutes have elapsed since the first page impression, further requests will be counted as a new unique visit.

Date	Amount	
Week 39	10/01/07-10/06/07	6178
Week 40	10/07/07-10/13/07	6129
Week 41	10/14/07-10/20/07	5879
Week 42	10/21/07-10/27/07	6712
Week 43	10/28/07-11/03/07	5834
Week 44	11/04/07-11/10/07	6503
Week 45	11/11/07-11/17/07	6319
Week 46	11/18/07-11/24/07	6177
Week 47	11/25/07-12/01/07	6481
Week 48	12/02/07-12/08/07	6738
Week 49	12/09/07-12/15/07	6495
Week 50	12/16/07-12/22/07	6916
Week 51	12/23/07-12/29/07	7114
Week 52	12/30/07-12/31/07	1883
Total		85358

Page Views

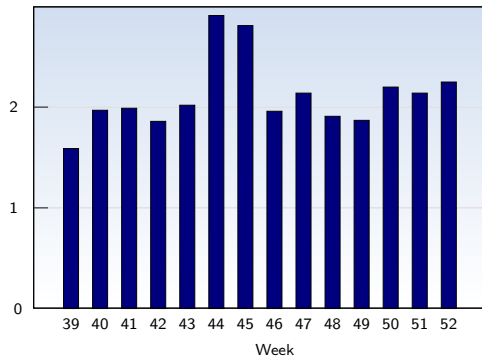


These statistics show all successful page views (also known as page impressions) and the time they were made. Only fully loaded pages are counted. Individual images and components are not included.

Date	Amount	
Week 39	10/01/07-10/06/07	9810
Week 40	10/07/07-10/13/07	12045
Week 41	10/14/07-10/20/07	11718
Week 42	10/21/07-10/27/07	12503
Week 43	10/28/07-11/03/07	11805
Week 44	11/04/07-11/10/07	18942
Week 45	11/11/07-11/17/07	17750
Week 46	11/18/07-11/24/07	12105
Week 47	11/25/07-12/01/07	13871
Week 48	12/02/07-12/08/07	12856
Week 49	12/09/07-12/15/07	12150
Week 50	12/16/07-12/22/07	15191
Week 51	12/23/07-12/29/07	15196
Week 52	12/30/07-12/31/07	4232
Total		180174



Pages per Visit

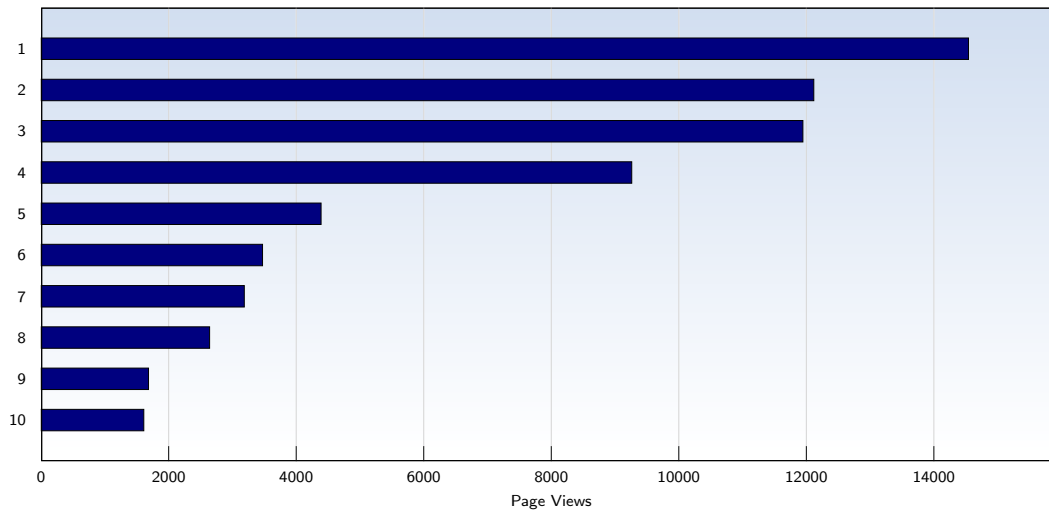


The average number of pages opened per unique visit. Only fully loaded pages are counted.

Date	Amount
Week 39 10/01/07-10/06/07	1.59
Week 40 10/07/07-10/13/07	1.97
Week 41 10/14/07-10/20/07	1.99
Week 42 10/21/07-10/27/07	1.86
Week 43 10/28/07-11/03/07	2.02
Week 44 11/04/07-11/10/07	2.91
Week 45 11/11/07-11/17/07	2.81
Week 46 11/18/07-11/24/07	1.96
Week 47 11/25/07-12/01/07	2.14
Week 48 12/02/07-12/08/07	1.91
Week 49 12/09/07-12/15/07	1.87
Week 50 12/16/07-12/22/07	2.20
Week 51 12/23/07-12/29/07	2.14
Week 52 12/30/07-12/31/07	2.25
Average	2.11



Top 10 Popular Pages

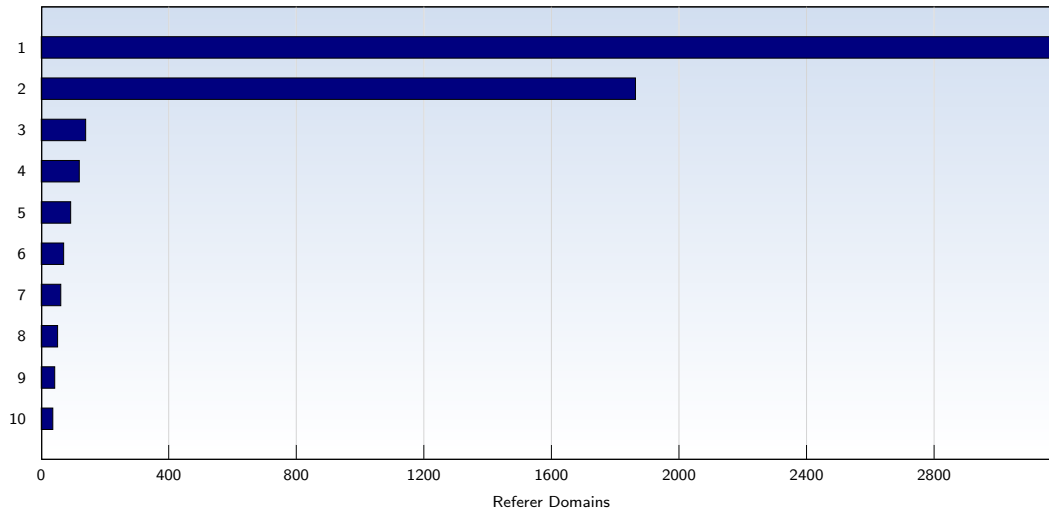


Rank	Page	Amount	%
1	lycolaw.org/index.asp	14545	8
2	lycolaw.org/robots.txt	12119	6
3	lycolaw.org/directory/record.asp	11948	6
4	lycolaw.org/directory/profile.asp	9264	5
5	lycolaw.org/directory/directory.asp	4392	2
6	lycolaw.org/news.asp	3474	1
7	lycolaw.org/Cases/result7.asp	3188	1
8	lycolaw.org/_vti_bin/_vti_aut/author.dll	2644	1
9	lycolaw.org/Cases/postings.asp	1686	0
10	lycolaw.org/court/court.htm	1612	0
	Total	180174	

These statistics show you the most frequently called pages.



Top 10 Referer Domains



Rank	Domain	Amount	%
1	google.com	3179	3
2	yahoo.com	1864	2
3	live.com	140	0
4	msn.com	120	0
5	aol.com	93	0
6	constantcontact.com	71	0
7	classbrain.com	62	0
8	northpennlegal.org	52	0
9	ask.com	43	0
10	onlinesearches.com	37	0
	Total	6370	

6370 out of 85358 visits contained a referer that could be evaluated. This analysis shows domains referring to your site. Subpages are summarized under the main domain.